



# Pacifitech AP AUTOMATION

**AP AUTOMATION FOR SAGE 300 IS PAPERLESS AUTOMATED SUPPLIER INVOICE PROCESSING INCORPORATING DATA INGESTION AND MACHINE LEARNING TECHNOLOGY TO ELIMINATE MANUAL DATA ENTRY, SPEED UP APPROVALS & DELIVER PROCESS EFFICIENCIES.**

## Sage 300

Our AP Automated solution extends to Procure-to-Pay (P2P) providing you with a comprehensive approvals process which significantly reduces costs and greatly improves accuracy.

Pacifitech's APA incorporates Payables & Purchasing Workflow & Web-based Connected Services - providing seamless connectivity into Sage 300's core AP modules from anywhere at any time. Easily configurable to how you operate, it delivers outstanding automation, flexibility and efficiencies for your business.

**Incoming data** - invoices are submitted and ingested via Pacifitech's Document Processing Service (DPS) and are readily available for review within minutes. Changes are made with ease and invoices submitted to the approval workflow with little manual intervention.

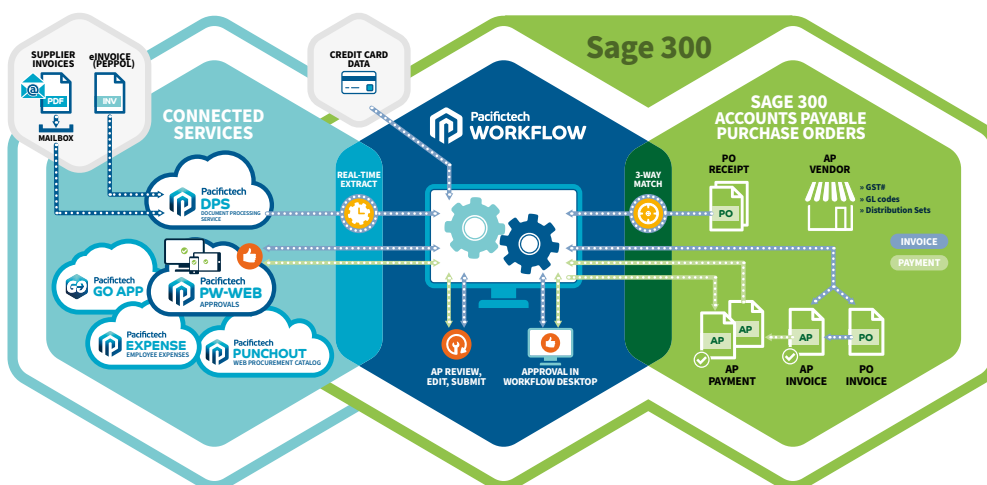
**Managing invoices** - robust integration with Sage 300 allows DPS to manage supplier settings and the effective configuring of our payables workflow to align with your specific supplier invoice approval process. Advanced supplier invoice approval workflows allows for multi-layer approvals on AP & PO Invoices as well as 3-way matching on receipt lines on PO invoices.

**Mobile and Connected Services** - complete approvals using PW-Web via a web browser or on a smartphone with our Pacifitech GO App. A user-friendly interface customised to your needs during set up ensures every requisition is straightforward and efficient.

**Pacifitech Expense** - allows you to automate and streamline employee expenses to quickly process credit card, P-card and expense claims within Sage 300. Captures receipts, categorises expenses and processes claims efficiently giving you the ability to review and track company expense data.

### Enjoy Significant Benefits for your Organisation and People

- More control and streamlined processes reduce team workload and increase efficiency.
- Ease of use and customisation improve user satisfaction levels.
- Automation delivers improved productivity giving team members time back to focus on core activities.
- Cost-effective process automation reduces human error leading to improved quality.
- On demand access allows transactions to be carried out anytime and anywhere Paperless solutions positively impacts the environment and reduces office space.



**BUILDING ON  
BUSINESS  
PERFORMANCE**



Pacifitech

### Additional Inclusions

**Pacifitech E-Invoice (PEPPOL)** - is the direct exchange of invoices between suppliers' and customers' financial systems using the PEPPOL international standard providing an economical EDI type solution. Proficient integration ingests e-invoice data files into our DPS as part of AP Automation functionality with no additional cost. All you need is the DPS Connected Service, Payables Workflow and Workflow Documents modules.

**Pacifitech Punchout (Web Procurement Catalog)** - using PW-Web, customers can view and make purchases directly from their vendor's catalogue residing on the supplier's e-commerce site. They can search for, compare and choose what to buy before returning shopping cart items to PW-Web for approval and purchase order creation.

### Pacifitech and Sage 300 – The Perfect AP Automation fit

With access for up to 250 users across businesses of all sizes, we provide several offerings to cover your monthly invoice volumes.

If you're a larger organisation with varied and complex requirements, Enterprise and Enterprise + offer feature rich, tailored solutions to meet all your needs.

### SYSTEM REQUIREMENTS

The on-premise installation must be operating Sage 300, with the Payables Workflow, Workflow Documents (and any other Pacifitech products in the bundle) being activated and properly implemented.

The DPS Web Service must be accessible to the Pacifitech Web Infrastructure via the Internet; refer to the whitepaper on security implementation best practices.

- PunchOut requires PO
- Browser Support - All modern browsers

DISCOVERY 100	PRO	PRO +	ENTERPRISE	ENTERPRISE +
Modules included	Modules included	Modules included	Modules included	Modules included
Payables Workflow Workflow Documents	Payables Workflow Workflow Documents Workflow & Notifications	Payables Workflow Workflow Documents Workflow & Notifications	Payables Workflow Workflow Documents Workflow & Notifications Key Communications	Payables Workflow Workflow Documents Workflow & Notifications Key Communications Funds Availability
100 Maximum Users (named) Workflow Engine Automated Data Extraction (OCR) Web Approvals Pacifitech Expense (Employee Expenses)	150 Maximum Users (named) Workflow Engine Automated Data Extraction (OCR) Web Approvals Pacifitech Expense (Employee Expenses) Payment Approvals Mobile App	150 Maximum Users (named)B Workflow Engine Automated Data Extraction (OCR)B Web Approvals Pacifitech Expense (Employee Expenses) Payment Approvals Mobile App	200 Maximum Users (named) Workflow Engine Automated Data Extraction (OCR) Web Approvals Pacifitech Expense (Employee Expenses) Payment Approvals Mobile App Procurement PunchOut Web Procurement Catalog	250 Maximum Users (named)B Workflow Engine Automated Data Extraction (OCR)B Web Approvals Pacifitech Expense (Employee Expenses) Payment Approvals Mobile App Procurement PunchOut Web Procurement Catalog Cost Center Budgeting gInvoicing Advanced Email FunctionalityB Email Document Log

Contact us for AP Automation pricing - [info@pacifitechsol.com](mailto:info@pacifitechsol.com)

Sage Tech Partner



As a Sage Intacct Market Place Partner, Pacifitech develops innovative solutions that empower Sage Intacct users with smarter, more connected business processes.

Pacifitech has a long and successful history as a Sage Tech Partner, delivering Sage 300 solutions that extend functionality and enhance business capability.

For more information on Pacifitech products and services supporting Sage communities worldwide, visit our website [www.pacifitechsol.com](http://www.pacifitechsol.com)

**Tech Partner of the Year** – Sage Australia/Pacific 2024

**Top Revenue Tech Partner** – Sage Africa/ME 2022

**Top Development Partner** – Sage Australia/Pacific 2021 | 2020 | 2015 | 2014

**Sage Global Development Partner of the Year** – 2009

**Top Development Partner** – Sage Asia 2008