



# Pacifitech AP AUTOMATION

**AP AUTOMATION FOR SAGE 300 IS PAPERLESS AUTOMATED SUPPLIER INVOICE PROCESSING INCORPORATING DATA INGESTION AND MACHINE LEARNING TECHNOLOGY TO ELIMINATE MANUAL DATA ENTRY, SPEEDING UP APPROVALS, DELIVERING PROCESS EFFICIENCIES AND GREATLY IMPROVES ACCURACY.**

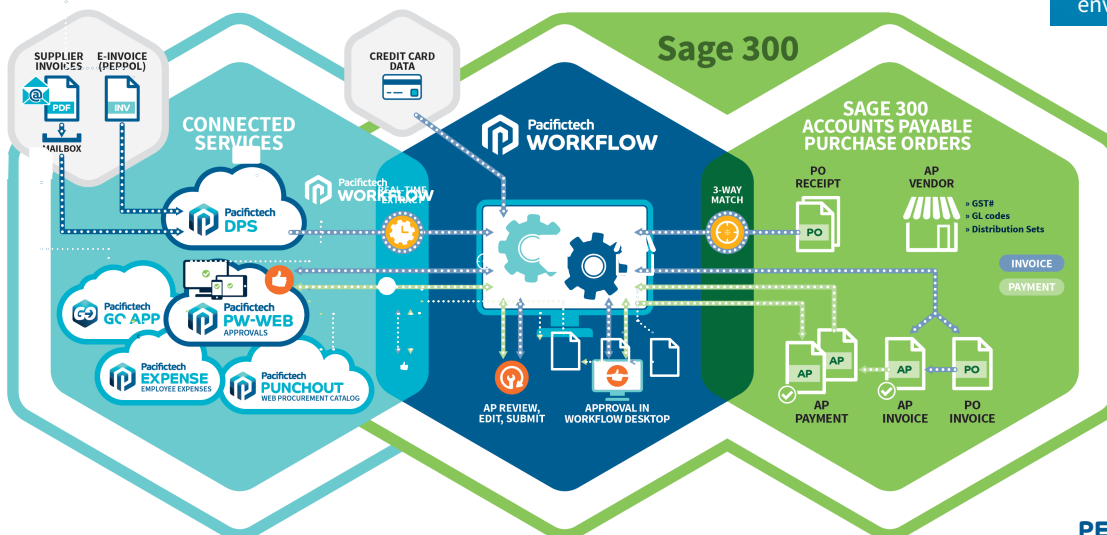
## Sage 300

**Our AP Automated solution extends to Procure-to-Pay (P2P) providing you with a comprehensive paperless approvals process which significantly reduces costs.**

- » **Pacifitech's APA incorporates Payables & Purchasing Workflow & Web-based Connected Services** - provides seamless connectivity into Sage 300's core AP modules from anywhere at any time. Being easily configurable to how you operate, it delivers outstanding automation, flexibility and efficiencies for your business.
- » **Incoming data** - invoices are submitted and ingested via Pacifitech's Document Processing Service (DPS) and are readily available for review within minutes. Changes are made with ease and invoices submitted to the approval workflow with little manual intervention.
- » **Managing invoices** - robust integration with Sage 300 allows DPS to manage supplier settings and the effective configuring of our Payables Workflow to align with your specific supplier invoice approval process.
- » **Mobile and Connected Services** - complete approvals using PW-Web via a web browser or on a smartphone with our Pacifitech GO App. A user-friendly interface customized to your needs during set up ensures every requisition is straightforward and efficient.
- » **Pacifitech Expense** - allows you to automate and streamline employee expenses to quickly process credit card, P-Card and expense claims within Sage 300. Captures receipts, categorizes expenses and processes claims efficiently giving you the ability to review and track company expense data.

**Enjoy significant benefits for your organization and people**

- » More control and streamlined processes reduce team workload and increase efficiency
- » Ease of use and customisation improve user satisfaction levels
- » Automation delivers improved productivity giving team members time back to focus on core activities
- » Cost-effective process automation reduces human error leading to improved quality
- » On demand access allows transactions to be carried out anytime and anywhere
- » Paperless solutions positively impact on office spaces and the environment



**BUILDING ON  
BUSINESS  
PERFORMANCE**



### Additional Inclusions:

» **PACIFITECH E-INVOICE (PEPPOL)** - is the direct exchange of invoices between suppliers' and customers' financial systems using the PEPPOL international standard providing an economical EDI type solution. Proficient integration ingests e-invoice data files into our DPS as part of AP Automation functionality with no additional cost. All you need is the DPS Connected Service, Payables Workflow and Workflow Documents modules.

» **PACIFITECH PUNCHOUT – WEB PROCUREMENT CATALOG** - using PW-Web, customers can view and make purchases directly from their vendor's catalogue residing on the supplier's e-commerce site. They can search for, compare and choose what to buy before returning shopping cart items to PW-Web for approval and purchase order creation.

### Pacifitech and Sage 300 – The Perfect AP Automation Fit:

### SYSTEM REQUIREMENTS

The on-premise installation must be operating Sage 300, with the Payables Workflow, Workflow Documents (and any other Pacifitech products in the bundle) being activated and properly implemented.

The DPS Web Service must be accessible to the Pacifitech Web Infrastructure via the Internet; refer to the whitepaper on security implementation best practices.

PunchOut requires PO.

Browser Support:  
**All modern browsers**

DISCOVERY 100	PRO	ENTERPRISE	ENTERPRISE +
Modules included	Modules included	Modules included	Modules included
Payables Workflow Workflow Documents	Payables Workflow Workflow Documents Workflow & Notifications	Payables Workflow Workflow Documents Workflow & Notifications Key Communications	Payables Workflow Workflow Documents Workflow & Notifications Key Communications Funds Availability
250 Maximum Users Workflow Engine Automated Data Extraction (OCR) Web Approvals	250 Maximum Users Workflow Engine Automated Data Extraction (OCR) Web Approvals Pacifitech Expense (Employee Expenses)	250 Maximum Users Workflow Engine Automated Data Extraction (OCR) Web Approvals Pacifitech Expense (Employee Expenses) Payments Mobile App E-invoicing (Receive)	250 Maximum Users Workflow Engine Automated Data Extraction (OCR) Web Approvals Pacifitech Expense (Employee Expenses) Payments Mobile App E-invoicing (Receive) Procurement PunchOut Cost Center Budgeting Advanced Email Functionality Email Document Log
-	-	-	-
-	-	-	-
-	-	-	-
-	-	-	-
-	-	-	-
-	-	-	-
-	-	-	-
-	-	-	-

Visit [www.pacifitechsol.com](http://www.pacifitechsol.com) for AP Automation solution pricing.

### Sage Tech Partner



Pacifitech has a long and successful history as a Sage ISV Development Partner, developing Sage 300 solutions that enhance the functionality and capability of Sage 300.

Pacifitech is a Sage Intacct MPP and is developing innovative solutions for Sage Intacct.

Visit our website [www.pacifitechsol.com](http://www.pacifitechsol.com) for further information on products and services that Pacifitech provides to the Sage communities around the world.

**Top Revenue Tech Partner** – Sage Africa/ME 2022

**Top Development Partner** – Sage Australia/Pacific 2021

**Top Development Partner** – Sage Australia/Pacific 2020

**Top Subscription Revenue** – Sage Australia/Pacific 2015

**Top Development Partner** – Sage Australia/Pacific 2014

**Sage Global Development Partner of the Year** – 2009

**Top Development Partner** – Sage Asia 2008