

## **Web Requisitioning & Approvals**

Creating Requisitions & reviewing Approvals in the widely accepted Purchasing Workflow solution can now be performed on the Web with only an Internet Browser. The beauty of this solution is that the customer can continue to run their Sage 300 "on-premise" yet leverage this service to reach large numbers of typically non-financial users.

### **Web Requisitions**

Requisitions in Purchasing Workflow can now be created with just a Web Browser and access to the Internet. The Web Requisition interface is elegant and easy to use; this makes the requisitioning process simple for non-financial users.

Web Requisitions complement the powerful Purchasing Workflow suite that operates with Sage 300.

This service is especially useful where a large number of non-financial users exist, where barriers exist to delivering Sage 300, or where the organisations users are frequently mobile yet need to create Requisitions remotely.

### **Web Approvals**

Senior staff and executives who are required to perform an essential step in the workflow process by approving (or declining) requisitions can now do so using the Web Approval.

Purchasing Workflow can be configured to send out "approval notifications" via email with a hyperlink directly to launch the specific Web Approval.

Funds Availability (the ability to look-up budget status and review other requisitions and PO commitments contending for budget), and the ability access any attached Workflow Documents

are two important features of this solution that assist the approval decision makers.

### **Smartphone Approvals**

For the travelling executive, the Web approvals can be accessed from a smartphone Browser. This capability can significantly improve the workflow completion performance.

Item	Item Description	UOM	Vendor	Vendor Name	Currency	Date Required	Quantity Required	Unit Cost	Source Currency Value
	US 20' by 38' for center Regpole	Ea.	AMERHOTEL	American Hotel Register	USD		3	\$3,840.00	\$11,520.00
<b>Total excluding tax:</b>									<b>\$11,520.00</b>

### **Zero Overhead Implementation**

Where Purchasing Workflow has already been implemented, there is minimal effort required to have the organization leveraging the benefits that the Web Requisitioning & Approvals portal can provide.

## Technical Design

Web Requisitions & Approvals is the first of a number of genuine Cloud-based Web Portals that leverage the power the PTS Workflow solutions and Sage 300.

PTS provides the Web based technology as a Cloud Service; the Web forms communicate with the customers "on-premise" implementation of Sage 300 via Web services.

Web Requisitions and Approvals remove the technical complexity of an Internet facing solution from the customer.

## Business Model

Web Requisitions are an ongoing cost to the customer, the charges comprise of a transactional fee that decreases for high volume users.

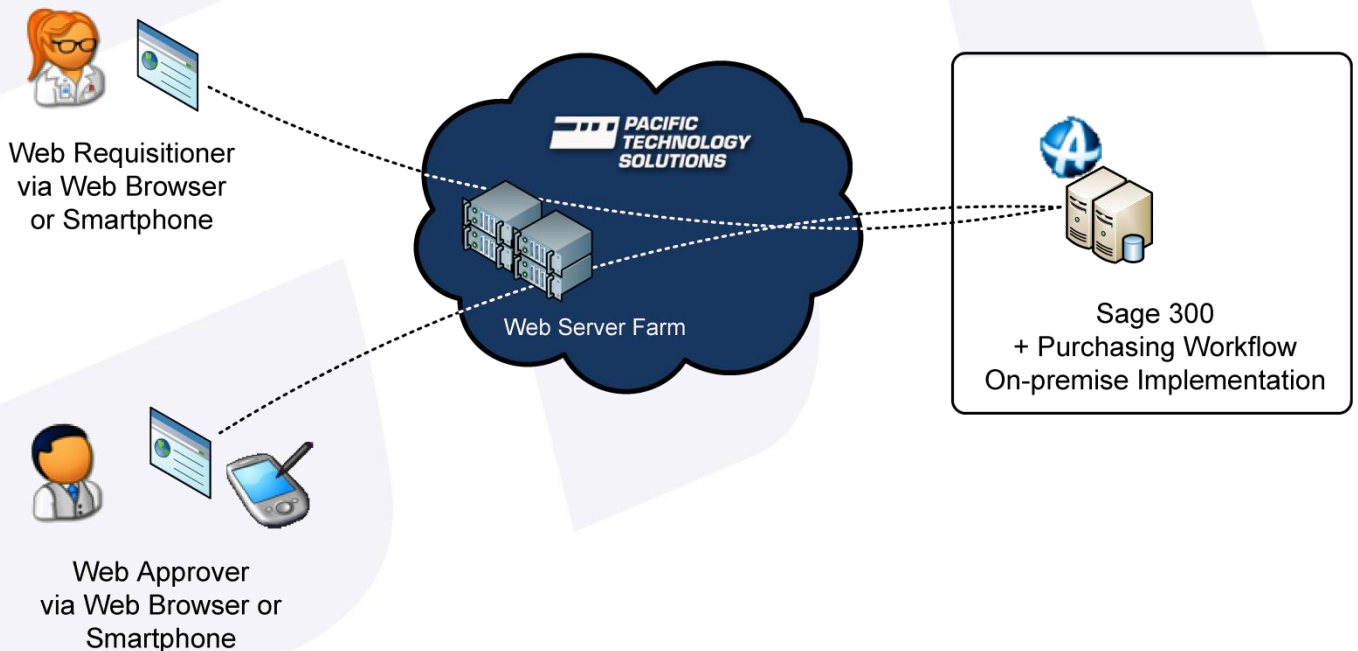
A service contract is mandatory between the customer and PTS as the service provider.

## System Requirements

The on-premise installation must be operating Sage 300 version 5.5A or above, with the Purchasing Workflow product being activated and properly implemented.

The PW-Web Web Service must be accessible to the PTS Web Infrastructure via the Internet; refer to the whitepaper on security implementation best practices.

Browser Support: Chrome, Firefox, Safari  
IE 9 and higher, Edge



Pacific Technology Solutions has a long and successful history as a Sage Development Partner developing Sage 300 modules that enhance the functionality and capability of the Sage 300 solution.

Please visit our website [www.pacifictechsol.com](http://www.pacifictechsol.com) for further information on products and services that Pacific Technology Solutions provides to the Sage 300 channel around the world.

**sage**

Development Partner

- Sage Australia/Pacific Top Subscription Revenue 2015
- Sage Australia/Pacific Top Development Partner 2014
- International Development Partner of the Year 2009
- Sage Asia Top Development Partner 2008

© Pacific Technology Solutions Ltd. All rights reserved.  
Sage, Sage 300 are registered trademarks or trademarks of Sage Software, Inc., or its affiliated entities. All other trademarks are the property of their respective owners.